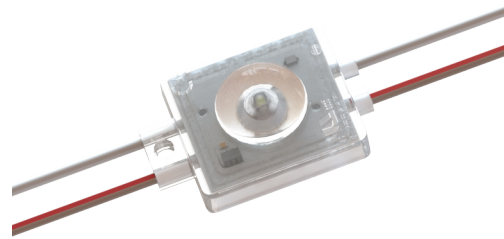


ULTRA 430 modules are an innovative option for backlit and halo applications. Suitable for super-low profiles starting at 1.2 in. (30 mm), ULTRA 400 Series modules are the perfect IP68 rated solution for shallow- to medium-depth box signs and channel letters.

Applications:

- Wide stroke channel letters
- Shallow to medium box signs
- Small to medium cloud signs
- Applications starting at 1.2 in. (30 mm) depth



ORDERING GUIDE

Part Number	White Color Temp.	Module Spacing (mm)	Number of Modules		Nominal Light Output (lm)*		
			Per Foot	Per Meter	Per Module	Per Foot	Per Meter
LS-U430-75K-B100-A**	7500K	100	3	10	33	99	330
LS-U430-65K-B100-A	6500K	100	3	10	34	102	340
LS-U430-57K-B100-A**	5700K	100	3	10	32	96	320
LS-U430-50K-B100-A**	5000K	100	3	10	32	96	320
LS-U430-40K-B100-A**	4000K	100	3	10	32	96	320
LS-U430-30K-B100-A**	3000K	100	3	10	30	90	300
LS-U430-27K-B100-A**	2700K	100	3	10	30	90	300
LS-U430-65K-B150-A***	6500K	150	2	6.7	33	68	228

** Limited stock

*** Consult for lead time and MOQ

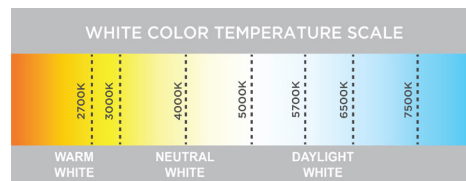
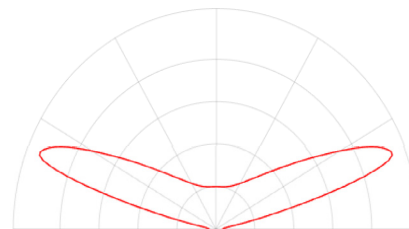
* ± 10%

PRODUCT RATINGS

Luminous Efficacy	113 lm/W @ 6500K
Wattage per Module	0.30 W Nominal 0.32 W Maximum
Input Voltage	12 V DC
Input Current	0.025 A/ module
Power Supply Loading	184 modules per 60 W
Ingress Protection	IP68
Operating Temperature	-40° - +140° F (-40° - +60° C)
L70 Lifetime @ 60° C	50,000 Hours
Warranty	9 Year Limited Warranty

LUMINOUS INTENSITY DISTRIBUTION

400 Series Batwing Beam Pattern



POWER SUPPLY LOADING

LS-U430-xxK-Bxxx-A							
Power Supply	Max. # of Modules Per Continuous String (100mm spacing)	Max. # of Modules Per Continuous String (150mm spacing)	Total # of Modules Per Power Supply ¹	Total # of Feet (100mm spacing)	Total # of Meters (100mm spacing)	Total # of Feet (150mm spacing)	Total # of Meters (150mm spacing)
UL CLASS 2	12 W	36	36	36	11.8	3.6	5.4
	15 W	45	45	46	15.1	4.6	6.9
	35 W	105	102	107	35.1	10.7	16.1
	60 W	145	122	184	60.4	18.4	27.6
	180 W ²	145	122	552	181.2	55.2	82.8
UL CLASS 1	100 W	145	122	300	98.4	30.0	45.0
	150 W	145	122	450	147.6	45.0	67.5
	180 W	145	122	540	177.2	54.0	81.0
	220 W	145	122	660	216.5	66.0	99.0

Note 1. The number of modules in each of the parallel strings should not exceed the specified maximum.
 2. 3 - 60 Watt Channels

LAYOUT GUIDE*

Channel Depth (in.)	Single Row		Multiple Rows		Channel Depth (mm)	Single Row		Multiple Rows	
	Max. Stroke	Module Spacing	Row Spacing	Module Spacing		Max. Stroke	Module Spacing	Row Spacing	Module Spacing
1.2	3	2.5	2.5	2.5	30	75	65	65	65
1.6	5	4	4	4	40	125	100	100	100
2	6	5	5	5	50	150	125	125	125

*Density guide designed to maintain a minimum of 600 lux for a single row or 800 lux for multiple rows at sign face (7328 white).

SHIPPING INFORMATION

Module Type	Specs	Packaging Quantity					
		Per Bag		Per Box		Per Carton	
LS-U430-xxK-Bxxx-A	Spacings	100mm	150mm	100mm	150mm	100mm	150mm
	Modules	100		500		2000	
	Feet	33	49	164	246	656	984
	Meters	10	15	50	75	200	300

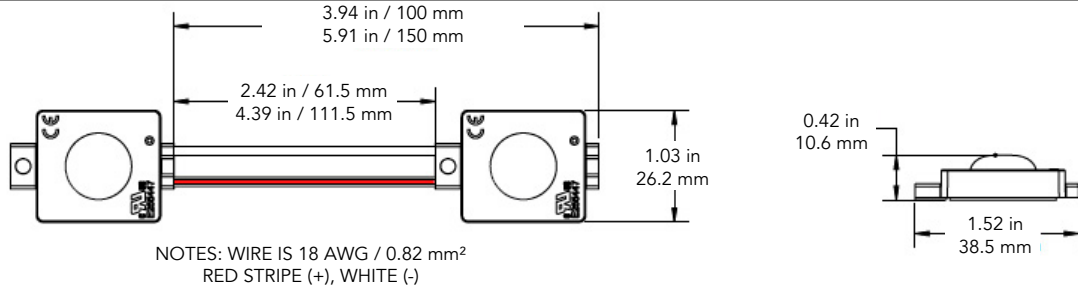
Carton Weight	Box Dimensions			Carton Dimensions			
	W	D	H	W	D	H	
46.3 lbs	22	10.6	4.5	22.8	20.1	11.6	inch
21 kg	560	270	115	580	510	295	mm



MODULE DIMENSIONS

Part Number	Length (in/mm)	Width (in/mm)	Height (in/mm)
LS-U430-xxK-Bxxx-A	1.52/38.5	1.03/26.2	0.42/10.6

DIMENSION DRAWING



1. UL ONLY - These products are only suitable for connection to a UL rated Class 2 power source rated 12 Volt or less.
2. UL ONLY - These products are intended for use only when connected to a power source that complies with UL rated Class 2 voltage and energy limited circuit.
3. UL ONLY -When these units are connected to a UL rated Class 2 circuit, they are not to draw a total wattage of greater than the secondary or output rating of the UL rated Class 2 power supply.
4. These products may be secured in place in the end product by any means available.
5. These products are suitable for use in dry, damp, and wet locations. Not suitable for submersed applications.