



BAIILED



SPORTS HALL



PRODUCTION HALL



INDUSTRY



LOGISTIC CENTER



GARDEN CENTER



CLEAN ROOM



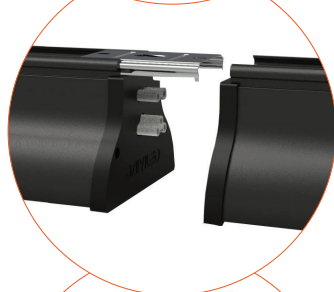
SHOPPING MALL



WAREHOUSE

AURORA LED INTELLIGENT LINEAR LUMINAIRE

SERIES 15W – 75W



DESCRIPTION

The Aurora LED linear luminaire is a unique product which will offer your business many benefits. The Aurora is built with a very durable aluminium housing and is equipped with premium components and LED chips. This gives the Aurora a lifespan of over 80,000 hours without requiring any maintenance and reducing energy costs up to 70%!

The Aurora luminaire provides flexibility in terms of installation. The fixture can be installed as a one-to-one replacement to fluorescent luminaires on any existing cable tray, but can also be installed on its own by using its innovative interconnecting feature. By doing so, the Aurora requires no cable tray and can form a perfect linear light.

The Aurora is developed to provide businesses with easy diversity through many different options. To accomplish this, the Aurora comes with simple push-in modules which work plug and play with the lighting system. Options such as motion sensors, emergency modules, wireless speakers and a connection possibility to all well known Internet of Things (IoT) software, which allows the lighting to be monitored, controlled and programmed through the internet anywhere on the planet. These options allow businesses to save up to 90% on their energy costs while also providing your staff with some nice music, all through a simple push-in module.

OPTIONAL

- Emergency Module (90min/180min)
- DALI
- Motion Sensor
- Daylight Detector

OTHER APPLICATIONS

- Exhibition Center
- School
- Retail
- Office
- Buildings
- Supermarket

BAIILED



This luminaire contains built-in LED lamps.



The lamps cannot be changed in the luminaire.

874/2012



AURORA LED INTELLIGENT LINEAR LUMINAIRE

SERIES 15W – 75W

PRODUCT DETAIL

PRODUCT CODE	PRODUCT DESCRIPTION	POWER (W)	LUMEN	EFFICIENCY (LM/W)	CCT (K)	CRI	DIMENSIONS L X W X H (MM)	REPLACEMENT FOR	LIFESPAN L80 AT 25°C
BY-LSD120-15WD10	Aurora LED Intelligent Linear Luminaire 0-10v Dimmable 120cm 15W IP20	15	2025	135	3000 / 4000 5000 / 6500	>80	1200 x 93 x 72	1 x 18w FL	80,000H
BY-LSD120-30WD10	Aurora LED Intelligent Linear Luminaire 0-10v Dimmable 120cm 30W IP20	30	4050	135	3000 / 4000 5000 / 6500	>80	1200 x 93 x 72	2 x 18w FL	80,000H
BY-LSD150-25WD10	Aurora LED Intelligent Linear Luminaire 0-10v Dimmable 150cm 25W IP20	25	3375	135	3000 / 4000 5000 / 6500	>80	1500 x 93 x 72	1 x 58w FL	80,000H
BY-LSD150-50WD10	Aurora LED Intelligent Linear Luminaire 0-10v Dimmable 150cm 50W IP20	50	6750	135	3000 / 4000 5000 / 6500	>80	1500 x 93 x 72	2 x 58w FL	80,000H
BY-LSD150-75WD10	Aurora LED Intelligent Linear Luminaire 0-10v Dimmable 150cm 75W IP20	75	10125	135	3000 / 4000 5000 / 6500	>80	1500 x 93 x 72	3 x 58w FL	80,000H
BY-LSD120-15WDL	Aurora LED Intelligent Linear Luminaire DALI Dimmable 120cm 15W IP20	15	2025	135	3000 / 4000 5000 / 6500	>80	1200 x 93 x 72	1 x 18w FL	80,000H
BY-LSD120-30WDL	Aurora LED Intelligent Linear Luminaire DALI Dimmable 120cm 30W IP20	30	4050	135	3000 / 4000 5000 / 6500	>80	1200 x 93 x 72	2 x 18w FL	80,000H
BY-LSD150-25WDL	Aurora LED Intelligent Linear Luminaire DALI Dimmable 150cm 25W IP20	25	3375	135	3000 / 4000 5000 / 6500	>80	1500 x 93 x 72	1 x 58w FL	80,000H
BY-LSD150-50WDL	Aurora LED Intelligent Linear Luminaire DALI Dimmable 150cm 50W IP20	50	6750	135	3000 / 4000 5000 / 6500	>80	1500 x 93 x 72	2 x 58w FL	80,000H
BY-LSD150-75WDL	Aurora LED Intelligent Linear Luminaire DALI Dimmable 150cm 75W IP20	75	10125	135	3000 / 4000 5000 / 6500	>80	1500 x 93 x 72	3 x 58w FL	80,000H

SPECIFICATIONS AND DETAILS

TECHNICAL SPECIFICATIONS

Dimmable	0-10V / DALI
Beam Angle	120°
IP Rating	IP20
IK Rating	IK04
Protection Class	I
Integrated Driver	Yes

ELECTRICAL SUPPLY

Voltage (V)	220 - 240
Frequency (Hz)	50 / 60
AC/DC	AC
Power Factor	>0.95
THD	<15

MATERIALS

Housing	Aluminium
Colour (Housing)	Black
Lens	Milky PMMA Diffuser
Mounting Brackets	Aluminium

APPLICATION

Operating Temperature	-20°C~45°C
-----------------------	------------

PROPERTIES OF OPTIONAL ITEMS

Emergency	External Module (90min/180min)
Motion Sensor	Detection radius up to 12m

DIMENSIONAL DRAWINGS

