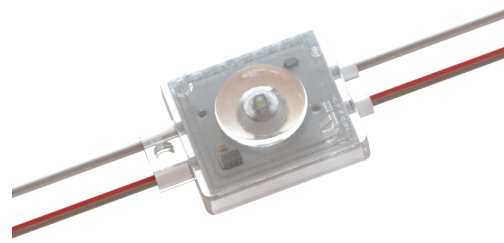




ULTRA 400 SERIES — This new comprehensive option for backlit applications is available in three lumen outputs and for super low-profiles at 1.2" (30 mm) to the standard 5" (125 mm) depth range. The ULTRA 400 offers options for shallow to medium depth box signs, and narrow to wide channel letters.

Applications:

- Wide stroke channel letters
- Shallow to medium box signs
- Small to medium cloud signs
- Applications starting at 2" (50 mm) depth



ORDERING GUIDE

Part Number	White Color Temp.	Module Spacing (mm)	Number of Modules		Nominal Light Output (lm)*		
			Per Foot	Per Meter	Per Module	Per Foot	Per Meter
LS-U450-75K-B150-A	7500K	150	2	6.6	48	96	317
LS-U450-65K-B150-A	6500K	150	2	6.6	50	100	330
LS-U450-57K-B150-A	5700K	150	2	6.6	47	94	310
LS-U450-50K-B150-A	5000K	150	2	6.6	47	94	310
LS-U450-40K-B150-A	4000K	150	2	6.6	47	94	310
LS-U450-30K-B150-A	3000K	150	2	6.6	44	88	290
LS-U450-27K-B150-A	2700K	150	2	6.6	44	88	290

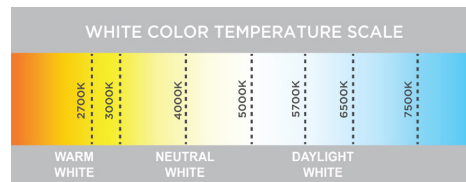
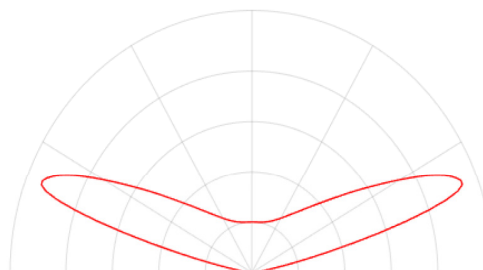
* ± 10%

PRODUCT RATINGS

Luminous Efficacy	104 lm/W @ 6500K
Wattage per Module	0.48 W Nominal 0.50 W Maximum
Input Voltage	12 V DC
Input Current	0.04 A/ module
Power Supply Loading	115 modules per 60 W
Ingress Protection	IP68
Operating Temperature	-40° — +140° F (-40° — +60° C)
L70 Lifetime @ 60° C	50,000 Hours
Warranty	9 Year Standard Warranty

LUMINOUS INTENSITY DISTRIBUTION

400 Series Batwing Beam Pattern





SHIPPING INFORMATION

Module Type	Specs	Packaging Quantity			Specs	Box Dimensions			Carton Dimensions		
		Per Bag	Per Box	Per Carton		W	D	H	W	D	H
LS-U450-xxx-B150-A	Modules	100	500	2000	inch	22.1	10.6	4.5	31.0	23.1	9.9
	Feet	49.2	246	984	mm	560	270	115	788	588	252
	Meters	15	75	300							

LAYOUT GUIDE*

Channel Depth (in.)	Single Row		Multiple Rows		Channel Depth (mm)	Single Row		Multiple Rows	
	Max. Stroke	Module Spacing	Row Spacing	Module Spacing		Max. Stroke	Module Spacing	Row Spacing	Module Spacing
2	6	5	4.5	4.25	50	150	125	115	110
3	9	4.25	8	4.25	75	225	110	200	110

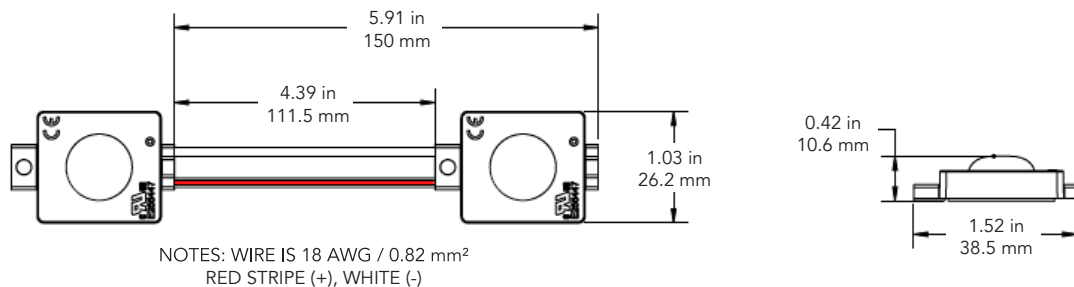
*Density guide designed to maintain a minimum of 600 lux for a single row or 800 lux for multiple rows at sign face (7328 white).

POWER SUPPLY LOADING

LS-U450-xxx-B150-A					
	Power Supply	Max. # of Modules Per Continuous String	Total # of Modules Per Power Supply	Total # of Feet	Total # of Meters
UL CLASS 2	12 W	22	23	11.3	3.5
	15 W	28	28	13.8	4.2
	35 W	65	67	33.0	10.1
	60 W	110	115	56.6	17.3
	180 W	110	345	169.8	51.9
UL CLASS 1	100 W	113	187	92.0	28.1
	150 W	113	281	138.3	42.2
	180 W	113	337	165.8	50.6
	220 W	113	412	202.8	61.8

Note 1. The number of modules in each of the parallel strings should not exceed the specified maximum.
2. *3 - 60 Watt Channels

DIMENSIONS



1. UL ONLY - These products are only suitable for connection to a UL rated Class 2 power source rated 12 Volt or less.
2. UL ONLY - These products are intended for use only when connected to a power source that complies with UL rated Class 2 voltage and energy limited circuit.
3. UL ONLY - When these units are connected to a UL rated Class 2 circuit, they are not to draw a total wattage of greater than the secondary or output rating of the UL rated Class 2 power supply.
4. These products may be secured in place in the end product by any means available.
5. These products are suitable for use in dry, damp, and wet locations. Not suitable for submersed applications.